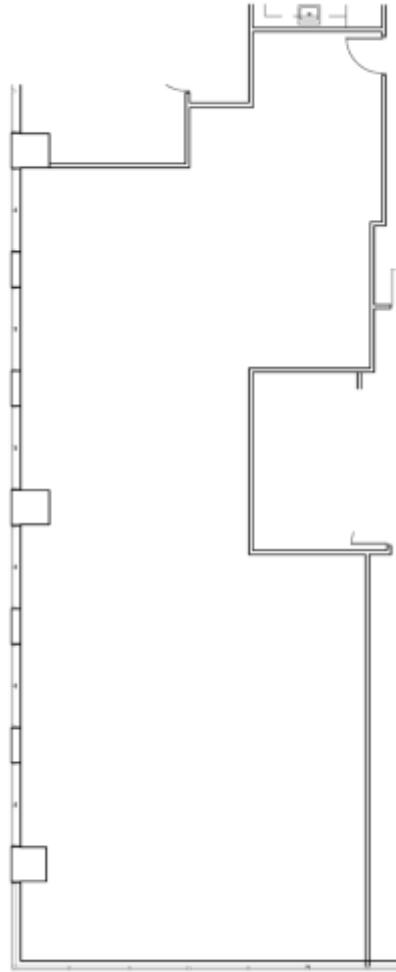


# Two WARREN PLACE

**Suite 1220**  
**Floor 12**  
**2,392 sqft**

## SUITE & BUILDING FEATURES

- EnergyStar and BOMA360
- 43-acre hillside location
- Dramatic three-story glass and granite lobby complete with palm trees
- Customized office suites
- Panoramic views of Tulsa
- On-site Management & Leasing Office
- 24/7 On-site Security
- Card access secured building and parking
- Seven-story parking garage with covered breezeway
- Full basement with loading dock and service facilities



## SUITE LOCATION



**GEMINI  
ROSEMONT**  
COMMERCIAL REAL ESTATE

## CONTACT

Kelly McKoy  
918.491.9267  
[kmckoy@mckoycompany.com](mailto:kmckoy@mckoycompany.com)